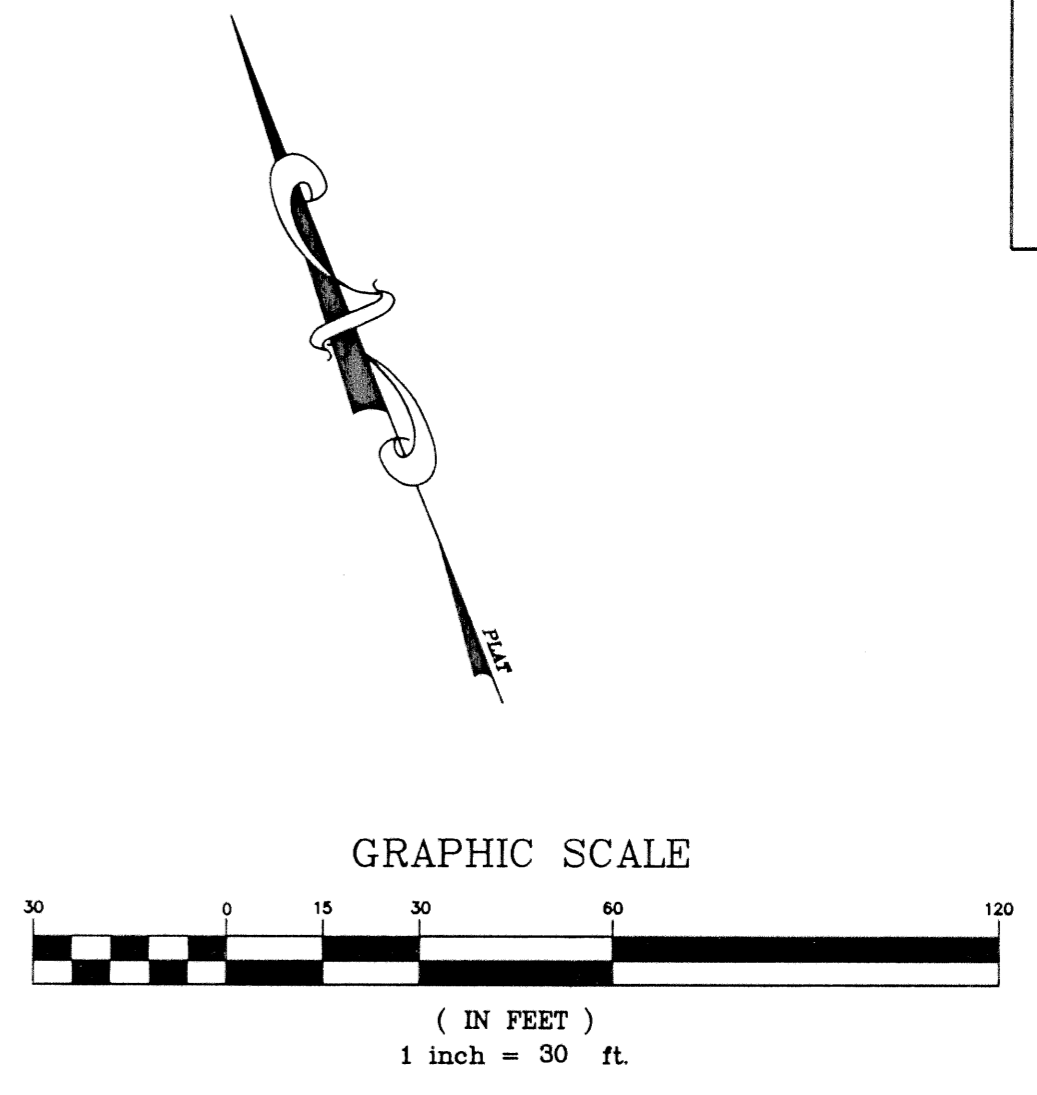
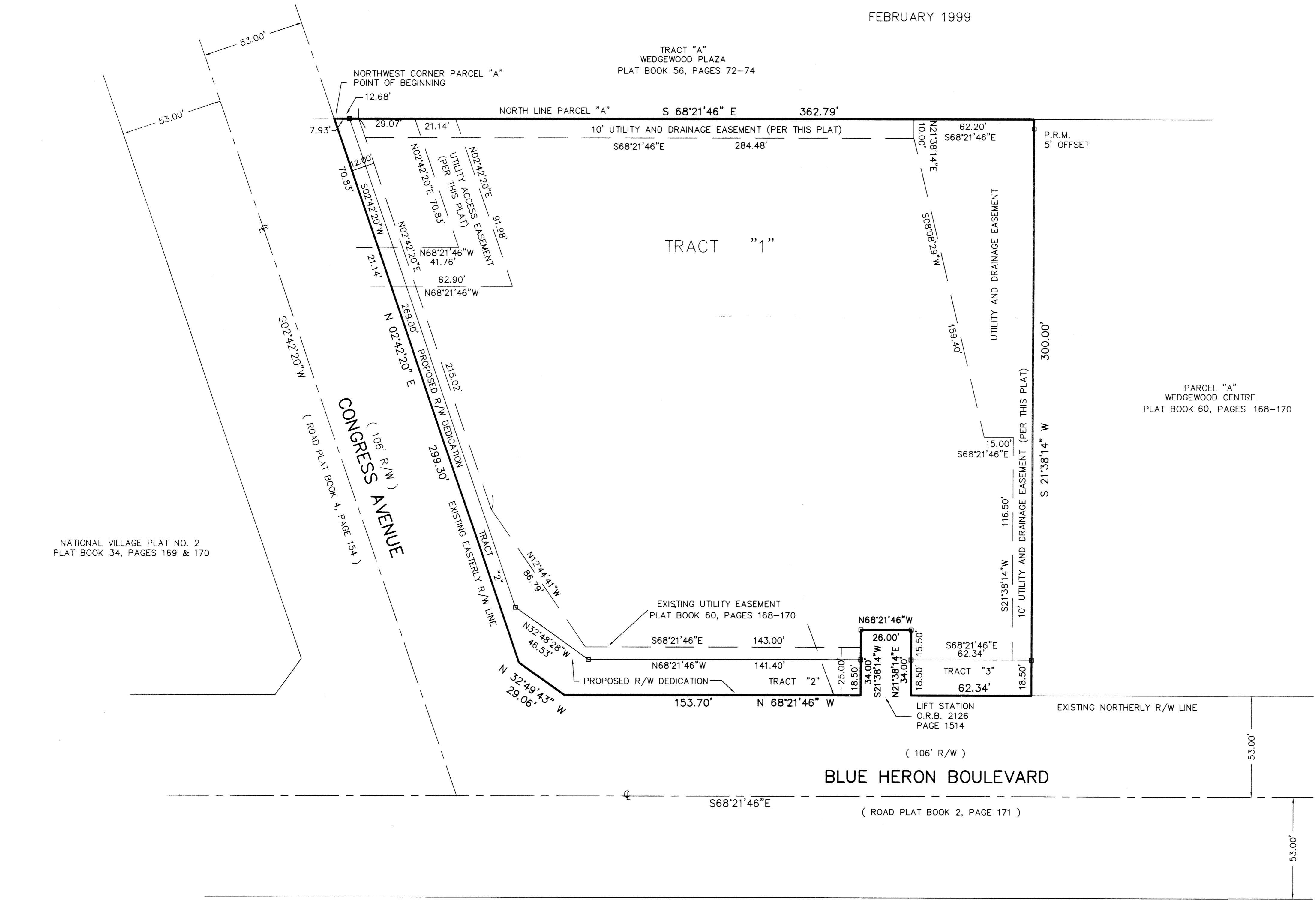


BLUE HERON WALGREENS

BEING A REPLAT OF

A PORTION OF PARCEL "A", WEDGEWOOD CENTRE, SECTION 30, TOWNSHIP 42 SOUTH, RANGE 43 EAST, PALM BEACH COUNTY, FLORIDA, AS RECORDED IN PLAT BOOK 60, PAGES 168 THROUGH 170, PUBLIC RECORDS OF PALM BEACH COUNTY, FLORIDA. CITY OF RIVIERA BEACH, PALM BEACH COUNTY, FLORIDA.

FEBRUARY 1999



- LEGEND:**
- - DENOTES P.R.M. (PERMANENT REFERENCE MONUMENT) LS 3366
 - U.E. - DENOTES UTILITY EASEMENT
 - D.E. - DENOTES DRAINAGE EASEMENT
 - P.B. - PLAT BOOK
 - O.R.B. - OFFICIAL RECORD BOOK
 - PG. - PAGE
 - ⊙ - CENTERLINE
 - R/W - RIGHT-OF-WAY

ALD II, INC. (LB #6592)
 THIS INSTRUMENT WAS PREPARED BY RICHARD D. ADAMS, JR., P.L.S.
 IN THE OFFICE OF ATLANTIC LAND DESIGN, INC.
 207 ATLANTIC AVENUE, FT. PIERCE, FL. 34950

ALD II, INC.
 207 ATLANTIC AVENUE
 FT. PIERCE, FL (561) 595-0850